

# Arjo Mattress Rental Service

## ARJO SERVICE PROCEDURE

- Pick up mattress and pump from hospital or aged care facility in the area
- Return to an Arjo depot
- Dismantling and cleaning of the mattress cells and base to an independently certified standard with the use of Viraclean disinfection solution
- Laundering of the mattress cover to at least 70 degree Celsius using independently certified chemicals
- Testing of the cells for faults or leaks
- Re-assembling the mattress
- Cleaning of the pump outer case, checking for cracks and breaks in the lead, and function testing
- Date tagging of the pump
- Electrical safety testing and issue of conformance certificate
- Dispatch of clean mattress and pump to the next hospital that places an order



Arjo Express  
customer



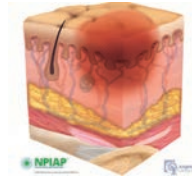
Arjo Rental  
Resources

**Contact us to become an  
online Arjo Express customer**

### STAGE 1

#### PRESSURE INJURY

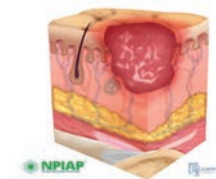
Non-blanchable  
erythema of intact skin



### STAGE 2

#### PRESSURE INJURY

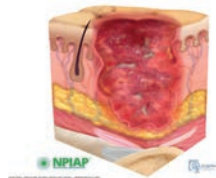
Partial-thickness skin  
loss with exposed  
dermis



### STAGE 3

#### PRESSURE INJURY

Full-thickness skin loss



### STAGE 4

#### PRESSURE INJURY

Full-thickness loss of  
skin and tissue



#### UNSTAGEABLE

#### PRESSURE INJURY

Obscured full-  
thickness skin and  
tissue loss



#### DEEP TISSUE

#### PRESSURE INJURY

Persistent non-  
blanchable deep red,  
maroon or purple  
discoloration



Reference: <https://npiap.com>

## Arjo rental delivery and pick-up service is available

To place an order or to arrange for a collection,  
please contact our rentals team on 1800 00 7368 (RENT),  
or email [customerservice-au@arjo.com](mailto:customerservice-au@arjo.com)