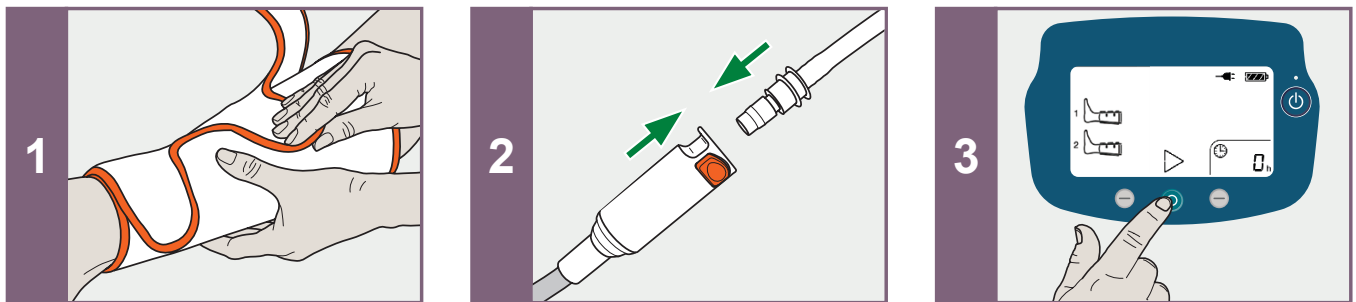


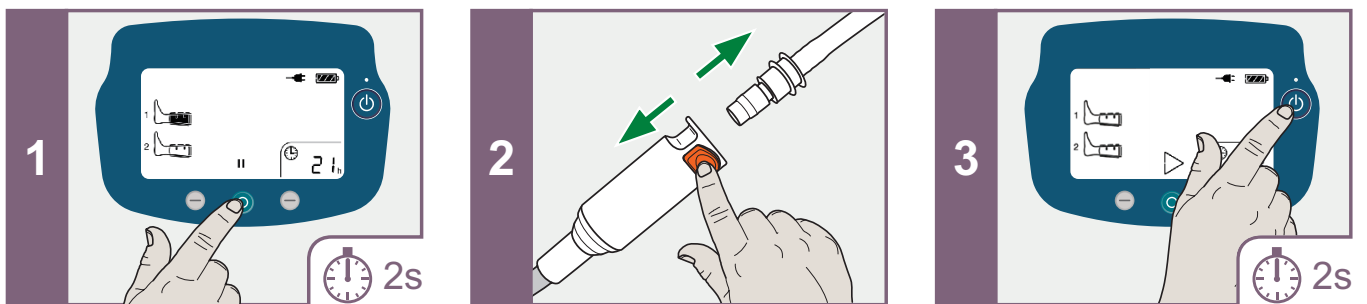
Flowtron ACS900

QUICK GUIDE

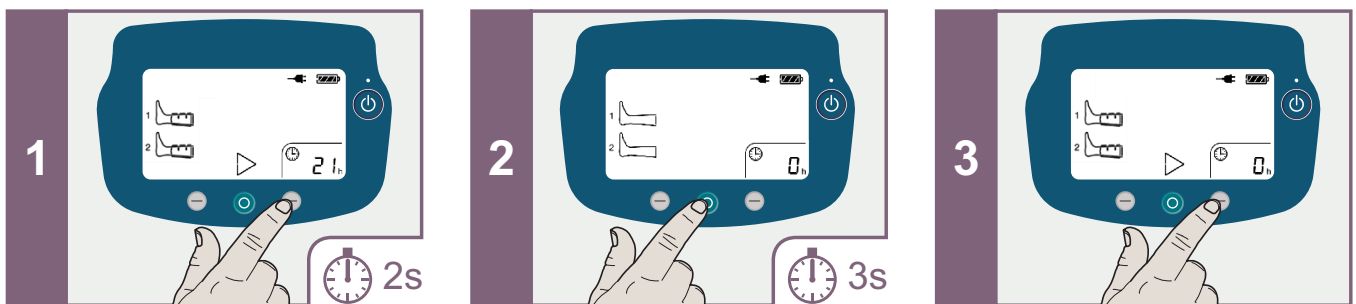
STARTING THERAPY



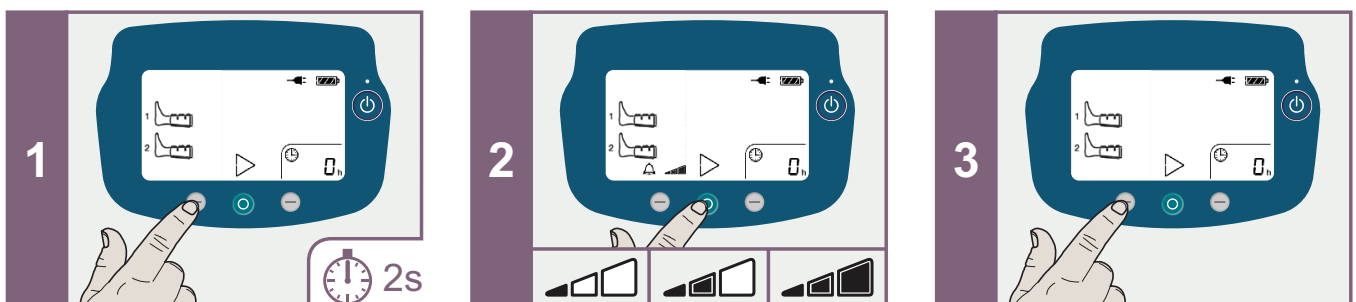
STOPPING THERAPY



RESETTING THE PATIENT RUN HOURS



TO CHANGE THE AUDIBLE ALARM VOLUME SETTING



Garment Type and Inflation Indication

Garment	Connected	Connected and Inflated
Foot		
Uniform (DVT) Calf (or Calf & Thigh)		
Sequential (Tri Pulse) Calf (or Calf & Thigh)		

Warning and Alarm Indications

Alarm detected which may cause an interruption in therapy	
Low pressure or garment leak.	
Kinked or blocked tubeset.	
High temperature.	
Hardware fault detected or periodic service required.	

Alarm Conditions

Low Pressure/ Leak		Faulty Tubeset	
Kinked/ Blocked Tube		High Temperature	
Garment Disconnected		Hardware Fail	
Service Required		Tubeset Disconnected/ Calibration Required	
Battery Low			



416208-EN Rev A • 07/2015